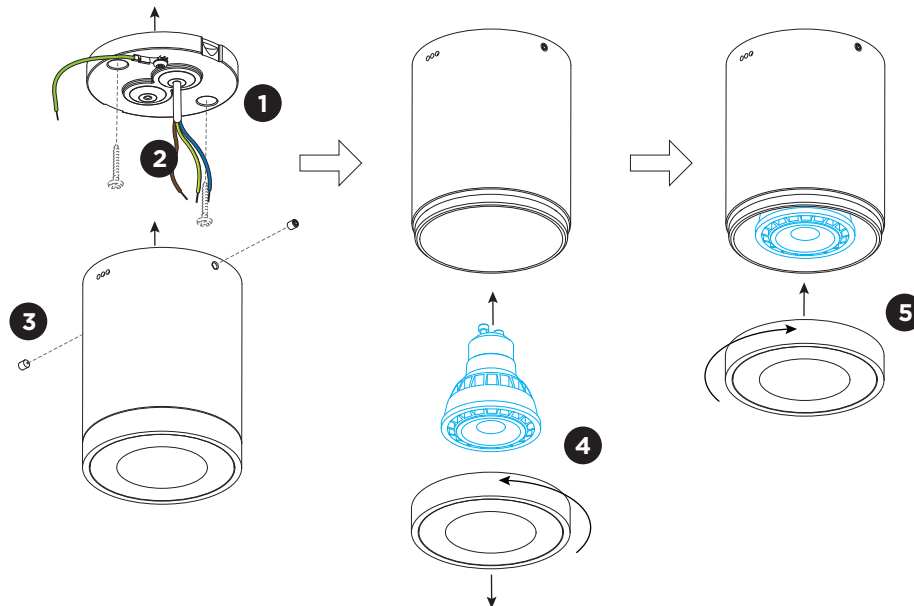
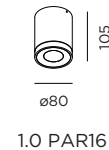


TUBE CEILING PAR16

INSTALLATION INSTRUCTIONS | AUGUST 2023



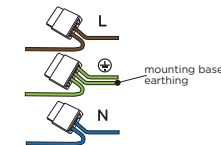
DIMENSIONS



MOUNTING INSTRUCTION

- 1 Remove the mounting base by loosening the socket screws and fix it to the ceiling with screws (screws are not included).

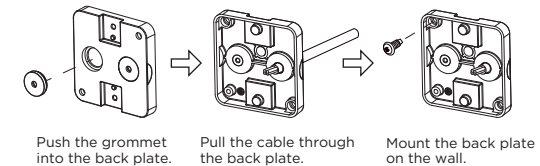
- 2 **POWER CONNECTION**
Connect to 220-240V.



Connect the earth cable.

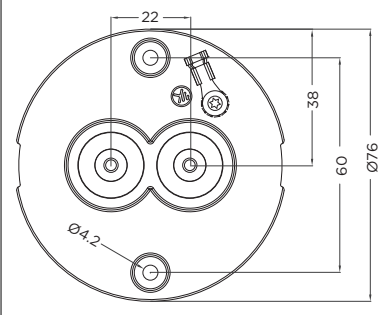


Always use a matching grommet based on the used 220-240V cable and the corresponding type in the overview table.
for example:



- 3 Fix the fixture to the mounting base with socket screws.
- 4 Remove the glass cover by turning it counter clockwise to insert the lamp.
- 5 Turn the glass covers clockwise on the fixture.

Mounting base:



Always use a matching grommet in the overview table.

| | A | B | C |
|--------------------|-----------------------------------------------------------------------------------|----------------------------------------------------|-------------------------------------------|
| | | | |
| CABLE | | | |
| TYPE | ROUND H05RN-F H07RN8-F H07RN-F | ROUND H05RN-F | ROUND |
| OUTSIDE Ø | min 6.8mm max 8.9mm | min 5mm max 6.8mm | min 1.5mm max 2.6mm |
| CONDUCTION SECTION | 2or3x 0.75mm ² 2or3x 1.0mm ² 2or3x 1.5mm ² | 2or3x 0.75mm ² 2x 1.0mm ² | 0.75mm ² 1.5mm ² |



WEVER & DUCRÉ
LIGHTING

WEVER & DUCRÉ BV

Spinnerijstraat 99/21, 8500 Kortrijk, Belgium
weverducre.com