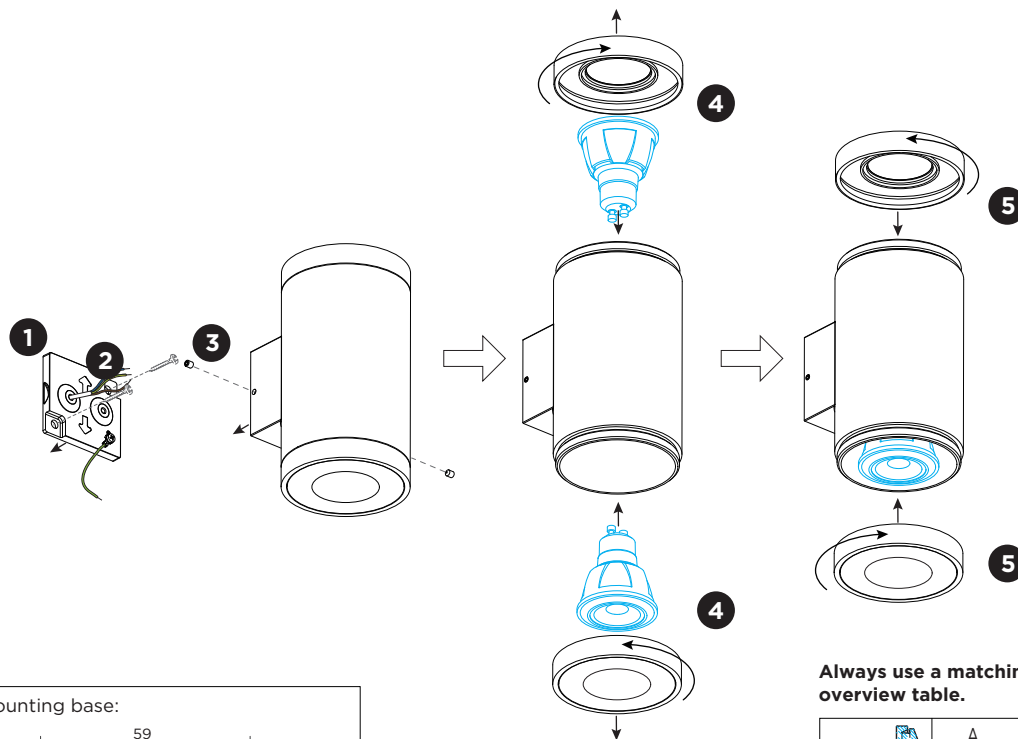
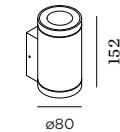


TUBE wall 2.0 PAR16

INSTALLATION INSTRUCTIONS | AUGUST 2023



DIMENSIONS



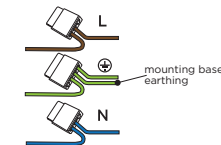
2.0 PAR16

MOUNTING INSTRUCTION

- 1 Remove the mounting base by loosening the socket screws and fix it to the wall with screws (screws are not included).

2 POWER CONNECTION

Connect to 220-240V.

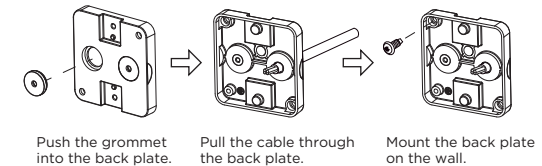


Connect the earth cable.



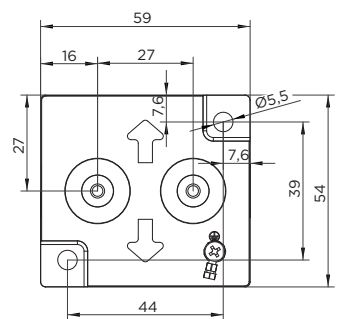
Always use a matching grommet based on the used 220-240V cable and the corresponding type in the overview table.

for example:



- 3 Fix the fixture to the mounting base with socket screws.
- 4 Remove the glass cover(s) by turning them counter clockwise to insert the lamp(s).
- 5 Turn the glass covers clockwise on the fixture.

Mounting base:



Always use a matching grommet in the overview table.

	A	B	C
CABLE			
TYPE	ROUND H05RN-F H07RN8-F H07RN-F	ROUND H05RN-F	ROUND
OUTSIDE Ø	min 6.8mm max 8.9mm	min 5mm max 6.8mm	min 1.5mm max 2.6mm
CONDUCTION SECTION	2or3x 0.75mm² 2or3x 1.0mm² 2or3x 1.5mm²	2or3x 0.75mm² 2x 1.0mm²	0.75mm² 1.5mm²



WEVER & DUCRÉ
LIGHTING

WEVER & DUCRÉ BV

Spinnerijstraat 99/21, 8500 Kortrijk, Belgium
weverducre.com