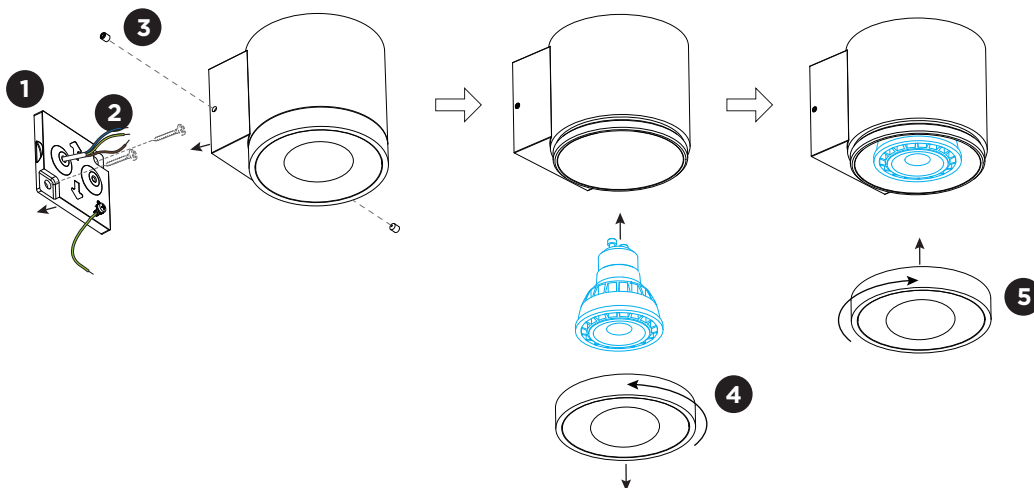
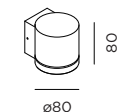


TUBE wall 1.0 PAR16

INSTALLATION INSTRUCTIONS | AUGUST 2023



DIMENSIONS



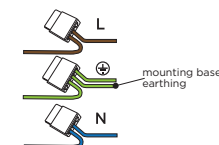
1.0 PAR16

MOUNTING INSTRUCTION

- 1 Remove the mounting base by loosening the socket screws and fix it to the wall with screws (screws are not included).

2 POWER CONNECTION

Connect to 220-240V.

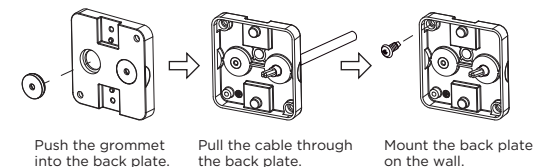


Connect the earth cable.



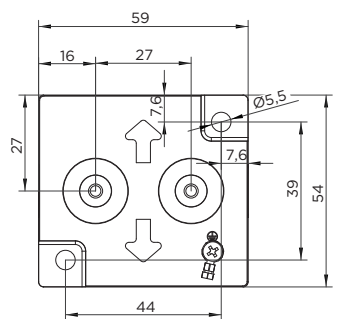
Please use a matching grommet based on the used 220-240V cable and the corresponding type in the overview table.

for example:



- 3 Fix the fixture to the mounting base with socket screws.
- 4 Remove the glass cover by turning it counter clockwise to insert the lamp.
- 5 Turn the glass cover clockwise on the fixture.

Mounting base:



grommets overview table:

	A	B	C
CABLE			
TYPE	ROUND H05RN-F H07RN8-F H07RN-F	ROUND H05RN-F	ROUND
OUTSIDE Ø	min 6.8mm max 8.9mm	min 5mm max 6.8mm	min 1.5mm max 2.6mm
CONDUCTION SECTION	2or3x 0.75mm ² 2or3x 1.0mm ² 2or3x 1.5mm ²	2or3x 0.75mm ² 2x 1.0mm ²	0.75mm ² 1.5mm ²



WEVER & DUCRÉ
LIGHTING

WEVER & DUCRÉ BV
Spinnerijstraat 99/21, 8500 Kortrijk, Belgium
weverducre.com