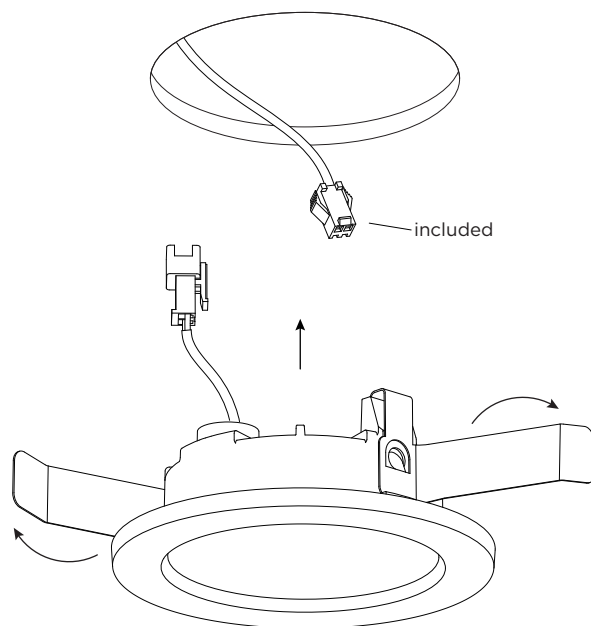


LUNA IP44

INSTALLATION INSTRUCTIONS | DECEMBER 2023



DIMENSIONS

1.0 ROUND

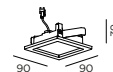


76-79

55

min.12

1.0 SQUARE



73x73

55

min.12

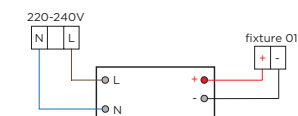
MOUNTING INSTRUCTION

1 Make a hole in the ceiling according to the prescribed dimensions.

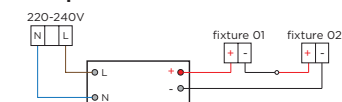
2 POWER CONNECTION

Always use a driver according to the specifications of the LED module.

Single connection



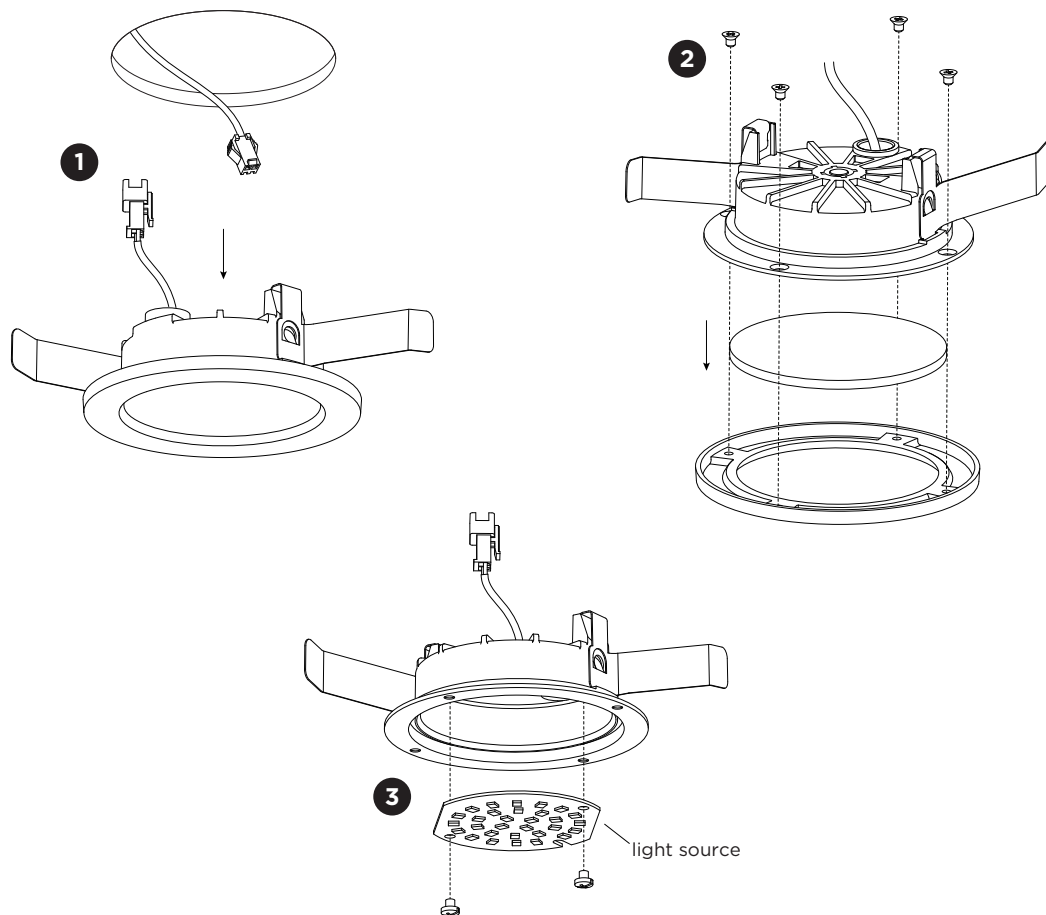
Multiple connection



3 Push the springs towards the luminaire and insert the fixture in the hole.

LUNA IP44

INSTALLATION INSTRUCTIONS | DECEMBER 2023



DISMOUNTING AND RECYCLING INSTRUCTIONS

Light source

- 1** Take the luminaire out of the ceiling hole and disconnect the wires.
- 2** Unscrew the cover and remove the diffuser.
- 3** Unscrew the light source to remove it.



The light source is replaceable by Wever & Ducré or by a professional with explicit authorisation. For more information please contact your local Wever & Ducré customer service point.



This luminaire contains a light source with the energy class E.



WEVER & DUCRÉ
LIGHTING

WEVER & DUCRÉ BV

Spinnerijstraat 99/21, 8500 Kortrijk, Belgium
weverducre.com